



Maltings Close, London, E3

BUTLER  STAG



Price Guide £400,000 - £450,000
Escape to your own urban sanctuary in this exceptional two bedroom garden flat on the charming Maltings Close in Bromley-by-Bow. This stylish and well-appointed residence offers the perfect blend of contemporary living, green outdoor space, and city convenience. It's an ideal choice for those seeking an urban retreat in the heart of East London.



Leasehold

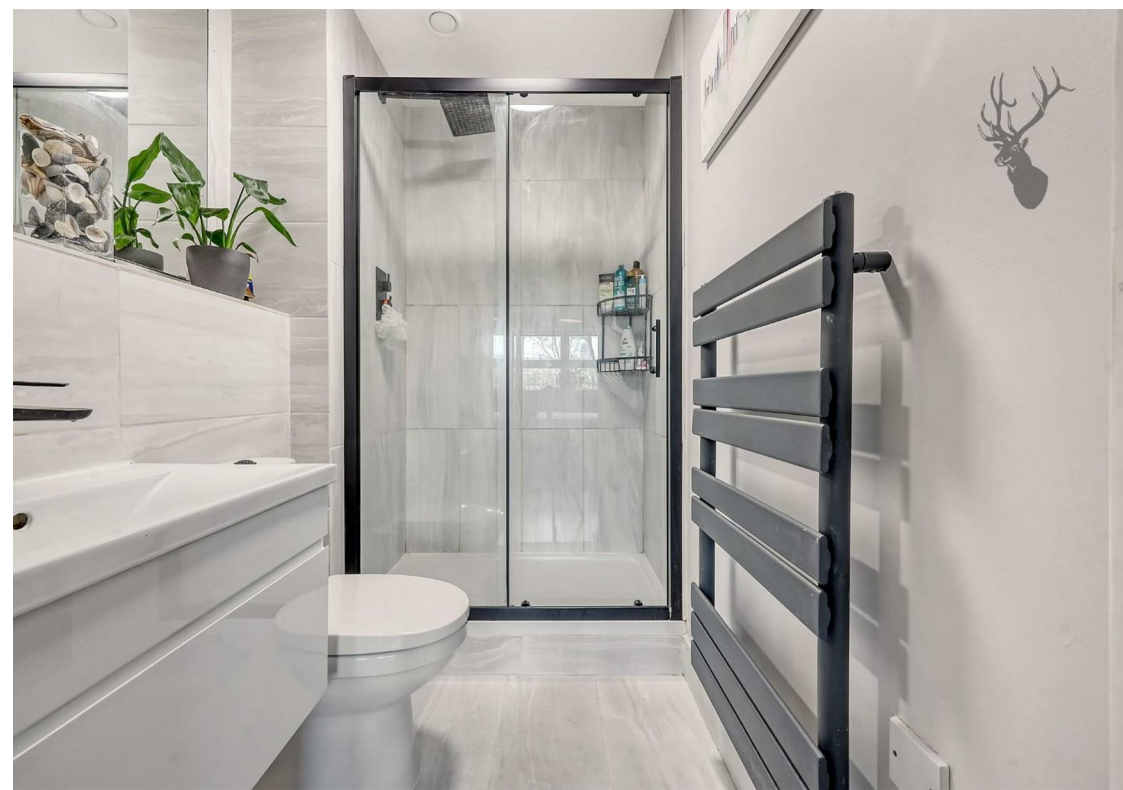
- Garden Apartment
- Modern Interiors
- Two Bathrooms
- Bromley By Bow Tube Station Close By
- Secure Gated Development
- Two Bedrooms
- Secure Allocated Parking
- 664 Sq/Ft Internal Living Space

The open-plan living area is bathed in natural light, creating an inviting space for relaxation, social gatherings, and everyday living. The kitchen is a chef's delight, equipped with modern appliances, sleek countertops, and an open layout that seamlessly connects to the living area. Step outside to your own private garden, an urban paradise where you can indulge in al fresco dining, or simply bask in the sun. This outdoor space is a rarity in the city and is perfect for unwinding. The two bedrooms provide a peaceful escape with ample space and privacy. They are versatile and perfect for professionals, or home offices. The bathroom is designed with modern fixtures, providing a spa-like atmosphere where you can relax and rejuvenate. You'll appreciate the generous storage options throughout the flat, ensuring a clutter-free living environment.

Maltings Close is ideally situated in Bromley-by-Bow, with excellent access to transportation links, including Bromley By Bow (District) and Devons Road (DLR) stations. Local amenities, parks, shops, and restaurants are just steps away.

Whether you're looking for a new home or an investment property, this garden flat presents a promising opportunity for rental income or future resale, thanks to its sought-after location.

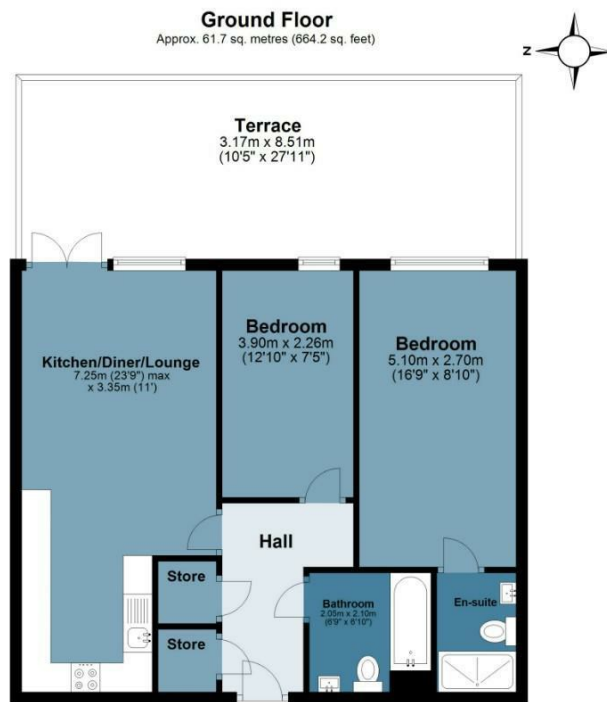




Maltings Close

Approx. Gross Internal Area 61.7Sq M (664.2 Sq Ft)

BUTLER & STAG



Measurements are approximate and for illustration purposes only. While we do not doubt the accuracy and completeness, we advise you conduct a careful independent assessment of the property to determine monetary value.
© @modephoto.uk www.modephoto.co.uk

IMPORTANT NOTICE - These particulars have been prepared in good faith and they are not intended to constitute part of an offer or contract. We have not performed a structural survey on this property and the services, appliances and specific fittings have not been tested. All photographs, measurements, floor plans and distances referred to are given as a guide and should not be relied upon.

BUTLER & STAG

☎ 020 8102 1236

🏠 508 Roman Road, Bow, London, E3 5LU

✉ bow@butlerandstag.com

www.butlerandstag.uk